

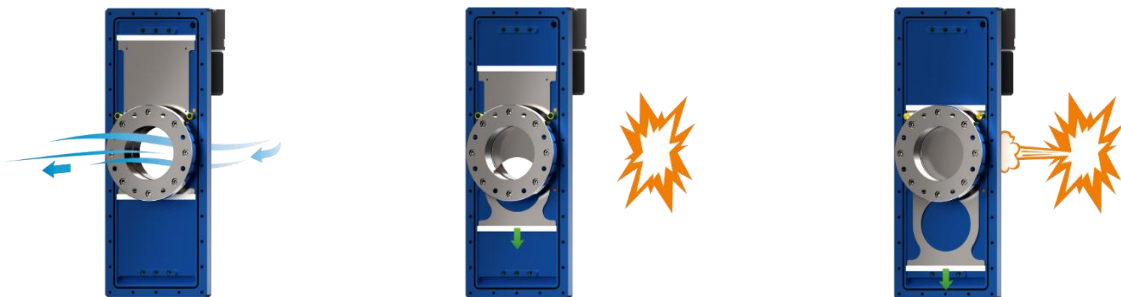
REDEX® Slide explosion protection slide valve

Optimised for explosion **suppressed or relieved systems**, the REDEX® Slide is the active and attractive solution with the shortest installation distances, making it the ideal isolation solution for processes with high dust loading and low explosion pressures.

Your added value:

- **Flexible pipe planning** thanks to shortest installation distances – guaranteed due to fastest closure times
- Highest process performance as there is **no pressure drop** due to free slide passage
- **Easy handling** during commissioning and servicing thanks to light and compact design
- **Planning and installation flexibility** due to free installation position
- Can be used in product-carrying lines with **high dust loads**
- Insensitive to dirt from outside and optimal cleanability thanks to **IP65 protection class**

Operating principle:



In **normal operation**, the medium flows through a pipe and the REDEX® Slide when it is in the open" position.

If the control system reports an **explosion** to the REDEX® Slide, the gas generator is ignited, pushing the slide down.

This **closes** the REDEX® Slide or the passage of the pipe and prevents the explosion from spreading.

Approvals and conformities:



**ATEX
EU-Type Examination Certificate:**

- FSA 14 ATEX 1647 X
- FSA 19 ATEX 1698 X
- FSA 25 ATEX 1734 X



Certified according EN 15089
Conform to NFPA 69

REDEX® Slide explosion protection slide valve

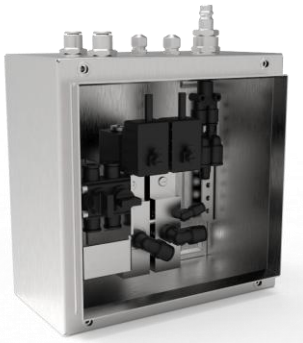
Specifications and design:

- Versions:
- REDEX® Slide for underpressure applications
 - REDEX® Slide for overpressure applications ≤ 0.5 barg
- Both versions are activated by gas generators and can be pneumatically actuated during service processing.
- Admission spectrum:
- For organic dusts $K_{st} 320 \text{ bar}\cdot\text{m/s}$ (DN50-DN150) and $K_{st} 200 \text{ bar}\cdot\text{m/s}$ (DN200-DN300)¹
 - Suitable for explosion-suppressed and pressure-relieved systems
- Explosion isolation:
- Dual acting
- Applicable in zones:
- | Inner zone | Outer zone ² |
|------------|-------------------------|
| - 20 | - None |
| - 21 | - 1 / 21 |
| - 22 | - 2 / 22 |
- Installation position:
- Any
- Housing material:
- Aluminium AW-6082, blue anodised
- Slider blade/Passage:
- Stainless steel 1.4301 (AISI 304)
- Flange design of connecting flanges:
- EN 1092-1 / PN 6
- Min./Max. Operating temperature:
- +5°C to 90°C
- Min./Max. Ambient temperature:
- +5°C to 60°C
- IP protection class:
- IP65
- Switch for position signalling:
- Two switches for indication of "open"/"closed" position
 - Two switches for indication of "in operation"/"secured" position

¹ The K_{st} value depends on the nominal diameter and design – for detailed information see installation guideline BT0105GB

² The outer zone depends on the attachments used. Please observe the unit category on the type plate and the technical data sheet of the respective REDEX® Slide.

REDEX® Slide explosion protection slide valve



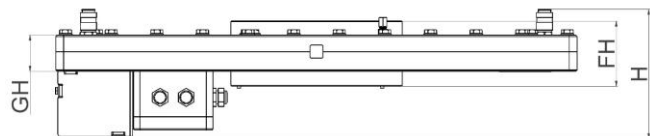
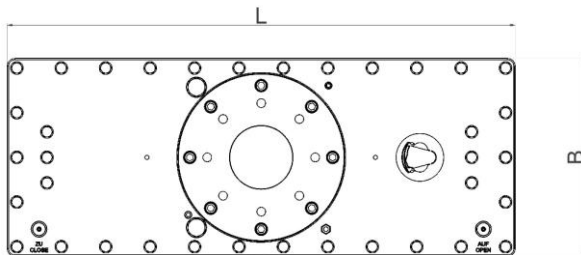
Pneumatic box

- The pneumatic box is available for the explosion protection slide REDEX® Slide and is suitable for pneumatic control from a distance.
- The pneumatic box is recommended especially for tight spaces or inaccessible installation locations.

External dimensions REDEX® Slide:

Dimensions (mm)	Nominal diameter								
	DN50	DN65	DN80	DN100	DN125	DN150	DN200	DN250	DN300
Length [L]	800	800	800	800	800	800	1265	1265	1265
Width [B]	310	310	310	310	310	310	475	475	475
Total height [H]	195	195	195	195	195	195	195	195	195
Housing height [GH]	55	55	55	55	55	55	55	55	55
Flange height [FH]	100	100	100	100	100	100	110	110	110
Net weight [in kg]	67	66	64	62	58	54	156	141	123

All dimensions are in mm, unless otherwise indicated



Further and supplementary information:

- BT0105GB_Einbaurichtlinie REDEX® Slide (Installation Guideline REDEX® Slide)
- BB0106GB_Betriebsanleitung REDEX® Slide (Instruction Manual REDEX® Slide)
- MB0012GB_Betriebsanleitung Pneumatikbox (Operating Instructions Pneumatic Box)
- BD0114GB_Transportverpackung (Transport Packaging)

This document is for information purposes only and is not applicable to all installation situations and versions of the product. Please feel free to contact us for further and more detailed information.