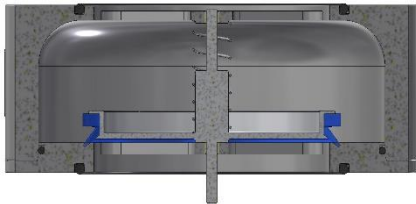


Overpressure valve REDisc

TT0004GB_0

Function principle



Overpressure valve in resting state: **closed**.

In the resting state, the valve poppet is in the closed position. The valve is closed. During normal operation, the valve poppet stays in the closed position.



Overpressure valve when activated: **open**.

In case of excessively high pressure, the pressure pushes the valve poppet into the open position. This allows the overpressure to escape. When the pressure drops again, the valve closes by itself.

Executions

Medium:	Clean and filtered air
Opening pressure:	5 mbar or 10 mbar
Housing material:	Stainless steel 1.4301 / Aluminium AW-6082 (anodized) valve poppet
Spring:	Stainless steel 1.4310
Flange design / connecting flanges:	EN 1092-1 / PN10 - PN40
Operating temperature:	+ 5 °C ... + 40 °C
Closing body gasket:	FKM
Flange gasket:	FKM or EPDM
Installation position:	Vertical (optional pressure from above or below), horizontal ¹
Tightness:	In accordance with the Norm EN 12266-1 leakage rate A

External dimensions

Nominal diameter	DN15	DN20	DN25	DN40	DN50	DN65	DN80	DN100
External dimension	74	78	81	105	107	140	150	170
Construction height	27	27	27	48	48	65	65	70

All dimensions in mm, unless otherwise indicated

Flow rate value

Nominal diameter	DN15	DN20	DN25	DN40	DN50	DN65	DN80	DN100
Cv-value	6.1	9.4	11.2	30.1	41.9	73.9	104.4	136.0

All data in m³/h, unless otherwise indicated

¹ Observe the flow direction indicated by an arrow on the name plate, the illustration in the "Operating principle" section shows the version with pressure from below

Overpressure valve REDisc

Scope of delivery

The overpressure valve is supplied fully assembled. A name plate is attached to every overpressure valve.

Commissioning and maintenance

The REDisc may only be installed by specialist personnel. This is specialist personnel who are familiar with commissioning, operation and maintenance with comparable products. The personnel must have qualifications appropriate to their function and activity, such as:

- Instruction and commitment to comply with all task-related, regional and in-house regulations and requirements
- Training with regard to the standards of safety technology in use, and consideration of appropriate work protection equipment

The maintenance must be performed **once a year**, the following steps need to be done:

- Visual inspection for dirt, condensate and damage
- Function test by moving the valve poppet axially

All elastomers must be replaced after **five years** in service.

Intended use

- The media resistance of the overpressure valve must be tested for the particular operating conditions
- The overpressure valve is not suitable for operation in vacuum
- Suitable exclusively for dust-free air
- The assembly must be carried out according to the recognised rules of technology

There shall be no guarantee for damages resulting from

- A lack of knowledge or non-adherence to the operating instructions
- Non-intended use and lack of servicing
- The use of unsuitable spare parts and unsuitable accessories



Assembly or maintenance work may only be carried out in an unpressurised state. All activities must only be carried out with the system switched off.